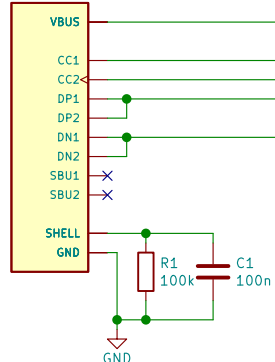


J1  
PJ-002A

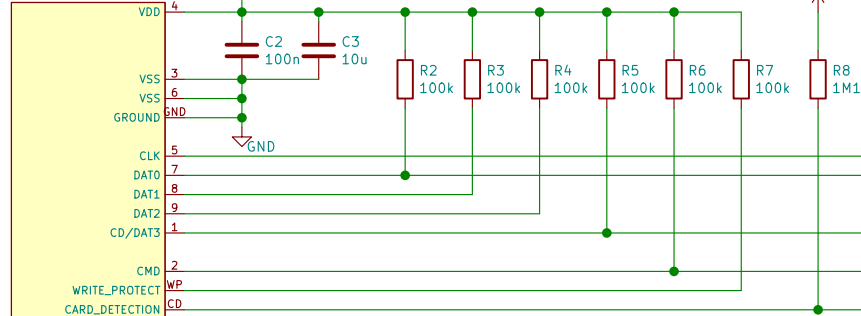
V\_Ext: 5V-28V\_DC / 0.5A

PowerSupply:  
- PPL18U-120  
- AA03E-120A-R  
- 3 x 3.6V Li-SOCI Battery

J2  
USB4085-GF-A-REVA



J3  
10067847-001RLF



Sheet: datalogger\_power

V\_Supply

V\_USB

File: datalogger\_power.sch

Sheet: usb\_connection

V\_USB

USB\_CC1

USB\_CC2

USB\_DP\_Ext

USB\_DM\_Ext

File: usb\_connection.sch

Sheet: datalogger\_microcontroller

V\_Supply

ENA\_3V3

ENA\_17V

ENA\_5V\_EXT

ENA\_5V\_USB

VDD\_USB

OTG\_Device

V\_CC1D

V\_CC2D

USB\_DP

USB\_DM

ADC\_IN3\_USB\_CC1

ADC\_IN4\_USB\_CC2

File: datalogger\_microcontroller.sch

Sheet: datalogger\_InOut

V\_Supply

VDDA

USR\_BT1

USR\_BT2

USR\_LED\_R

USR\_LED\_G

PA3\_ADC\_IN8

PA4\_ADC\_IN9

PA5\_ADC\_IN10

PA6\_ADC\_IN11

PC0\_ADC\_IN1

PC1\_ADC\_IN2

PC6

PC7

PC8

PC9

PC10

PC11

PC12

PB12\_SPI2\_NSS

PB13\_SPI2\_SCK

PB14\_SPI2\_MISO

PB15\_SPI2\_MOSI

PB10\_I2C2\_SCL

PB11\_I2C2\_SDA

File: datalogger\_InOut.sch

Sheet: datalogger\_internal

SPI1\_FLASH\_CS

SPI1\_BME280\_CS

SPI1\_SCK

SPI1\_MISO

SPI1\_MOSI

File: datalogger\_internal.sch

SPI1\_FLASH\_CS

SPI1\_BME280\_CS

SPI1\_SCK

SPI1\_MISO

SPI1\_MOSI

File: datalogger\_microcontroller.sch

SPI1\_FLASH\_CS

SPI1\_BME280\_CS

SPI1\_SCK

SPI1\_MISO

SPI1\_MOSI

File: datalogger\_microcontroller.sch

SPI1\_FLASH\_CS

SPI1\_BME280\_CS

SPI1\_SCK

SPI1\_MISO

SPI1\_MOSI

File: datalogger\_microcontroller.sch

SPI1\_FLASH\_CS

SPI1\_BME280\_CS

SPI1\_SCK

SPI1\_MISO

SPI1\_MOSI

File: datalogger\_microcontroller.sch

SPI1\_FLASH\_CS

SPI1\_BME280\_CS

SPI1\_SCK

SPI1\_MISO

SPI1\_MOSI

File: datalogger\_microcontroller.sch

SPI1\_FLASH\_CS

SPI1\_BME280\_CS

SPI1\_SCK

SPI1\_MISO

SPI1\_MOSI

File: datalogger\_microcontroller.sch

SPI1\_FLASH\_CS

SPI1\_BME280\_CS

SPI1\_SCK

SPI1\_MISO

SPI1\_MOSI

File: datalogger\_microcontroller.sch

SPI1\_FLASH\_CS

SPI1\_BME280\_CS

SPI1\_SCK

SPI1\_MISO

SPI1\_MOSI

File: datalogger\_microcontroller.sch

SPI1\_FLASH\_CS

SPI1\_BME280\_CS

SPI1\_SCK

SPI1\_MISO

SPI1\_MOSI

File: datalogger\_microcontroller.sch

SPI1\_FLASH\_CS

SPI1\_BME280\_CS

SPI1\_SCK

SPI1\_MISO

SPI1\_MOSI

File: datalogger\_microcontroller.sch

SPI1\_FLASH\_CS

SPI1\_BME280\_CS

SPI1\_SCK

SPI1\_MISO

SPI1\_MOSI

File: datalogger\_microcontroller.sch

SPI1\_FLASH\_CS

SPI1\_BME280\_CS

SPI1\_SCK

SPI1\_MISO

SPI1\_MOSI

File: datalogger\_microcontroller.sch

SPI1\_FLASH\_CS

SPI1\_BME280\_CS

SPI1\_SCK

SPI1\_MISO

SPI1\_MOSI

File: datalogger\_microcontroller.sch

SPI1\_FLASH\_CS

SPI1\_BME280\_CS

SPI1\_SCK

SPI1\_MISO

SPI1\_MOSI

File: datalogger\_microcontroller.sch

SPI1\_FLASH\_CS

SPI1\_BME280\_CS

SPI1\_SCK

SPI1\_MISO

SPI1\_MOSI

File: datalogger\_microcontroller.sch

SPI1\_FLASH\_CS

SPI1\_BME280\_CS

SPI1\_SCK

SPI1\_MISO

SPI1\_MOSI

File: datalogger\_microcontroller.sch

SPI1\_FLASH\_CS

SPI1\_BME280\_CS

SPI1\_SCK

SPI1\_MISO

SPI1\_MOSI

File: datalogger\_microcontroller.sch

SPI1\_FLASH\_CS

SPI1\_BME280\_CS

SPI1\_SCK

SPI1\_MISO

SPI1\_MOSI

File: datalogger\_microcontroller.sch

SPI1\_FLASH\_CS

SPI1\_BME280\_CS

SPI1\_SCK

SPI1\_MISO

SPI1\_MOSI

File: datalogger\_microcontroller.sch

SPI1\_FLASH\_CS

SPI1\_BME280\_CS

SPI1\_SCK

SPI1\_MISO

SPI1\_MOSI

File: datalogger\_microcontroller.sch

SPI1\_FLASH\_CS

SPI1\_BME280\_CS

SPI1\_SCK

SPI1\_MISO

SPI1\_MOSI

File: datalogger\_microcontroller.sch

SPI1\_FLASH\_CS

SPI1\_BME280\_CS

SPI1\_SCK

SPI1\_MISO

SPI1\_MOSI

File: datalogger\_microcontroller.sch

SPI1\_FLASH\_CS

SPI1\_BME280\_CS

SPI1\_SCK

SPI1\_MISO

SPI1\_MOSI

File: datalogger\_microcontroller.sch

SPI1\_FLASH\_CS

SPI1\_BME280\_CS

SPI1\_SCK

SPI1\_MISO

SPI1\_MOSI

File: datalogger\_microcontroller.sch

SPI1\_FLASH\_CS

SPI1\_BME280\_CS

SPI1\_SCK

SPI1\_MISO

SPI1\_MOSI

File: datalogger\_microcontroller.sch

SPI1\_FLASH\_CS

SPI1\_BME280\_CS

SPI1\_SCK

SPI1\_MISO

SPI1\_MOSI

File: datalogger\_microcontroller.sch

SPI1\_FLASH\_CS

SPI1\_BME280\_CS

SPI1\_SCK

SPI1\_MISO

SPI1\_MOSI

File: datalogger\_microcontroller.sch

SPI1\_FLASH\_CS

SPI1\_BME280\_CS

SPI1\_SCK

SPI1\_MISO

SPI1\_MOSI

File: datalogger\_microcontroller.sch

SPI1\_FLASH\_CS

SPI1\_BME280\_CS

SPI1\_SCK

SPI1\_MISO

SPI1\_MOSI

File: datalogger\_microcontroller.sch

SPI1\_FLASH\_CS

SPI1\_BME280\_CS

SPI1\_SCK

SPI1\_MISO

SPI1\_MOSI

File: datalogger\_microcontroller.sch

SPI1\_FLASH\_CS

SPI1\_BME280\_CS

SPI1\_SCK

SPI1\_MISO

SPI1\_MOSI

File: datalogger\_microcontroller.sch

SPI1\_FLASH\_CS

SPI1\_BME280\_CS

SPI1\_SCK

SPI1\_MISO

SPI1\_MOSI

File: datalogger\_microcontroller.sch

SPI1\_FLASH\_CS

SPI1\_BME280\_CS

SPI1\_SCK

SPI1\_MISO

SPI1\_MOSI

File: datalogger\_microcontroller.sch

SPI1\_FLASH\_CS

SPI1\_BME280\_CS

SPI1\_SCK

SPI1\_MISO

SPI1\_MOSI

File: datalogger\_microcontroller.sch

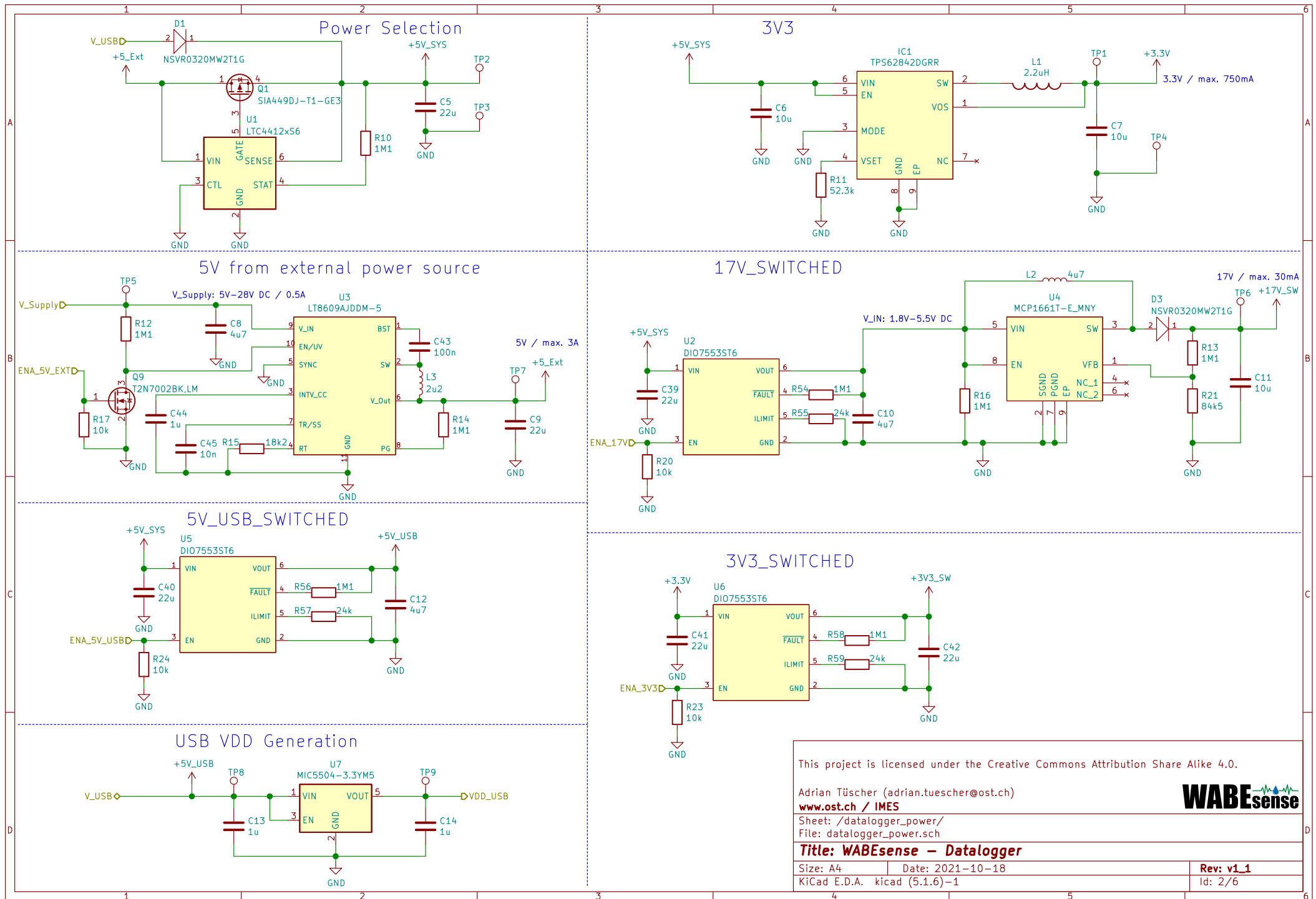
SPI1\_FLASH\_CS

SPI1\_BME280\_CS

SPI1\_SCK

SPI1\_MISO

SPI1\_MOSI



This project is licensed under the Creative Commons Attribution Share Alike 4.0.

Adrian Tüscher (adrian.tuescher@ost.ch)

[www.ost.ch](http://www.ost.ch) / IMES

Sheet: /datalogger\_power/

File: datalogger\_power.sch

**Title: WABEsense – Datalogger**

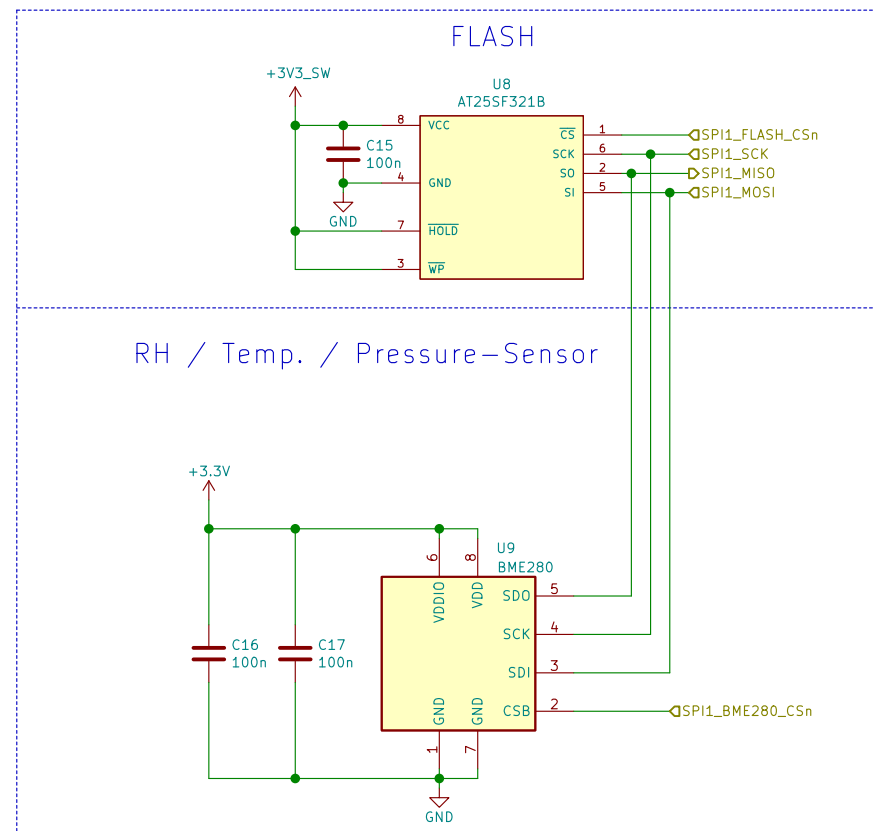
Size: A4 Date: 2021-10-18

KiCad E.D.A. kicad (5.1.6)-1

**WABEsense**

Rev: v1.1

Id: 2/6



This project is licensed under the Creative Commons Attribution Share Alike 4.0.

Adrian Tüscher (adrian.tuescher@ost.ch)

[www.ost.ch](http://www.ost.ch) / IMES

Sheet: /datalogger\_internal/

File: datalogger\_internal.sch

**Title: WABEsense – Datalogger**

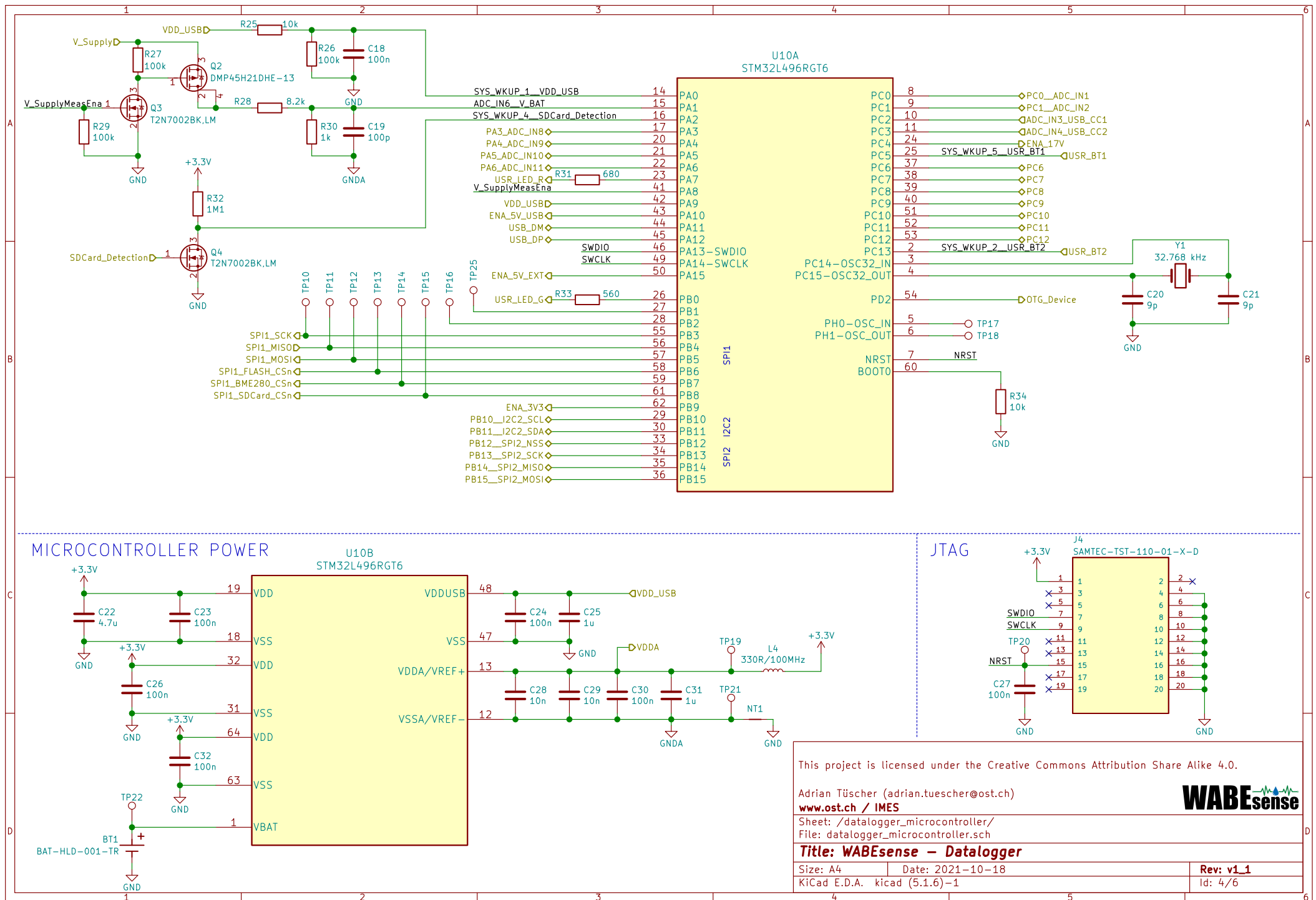
Size: A4 Date: 2021-10-18

KiCad E.D.A. kicad (5.1.6)-1

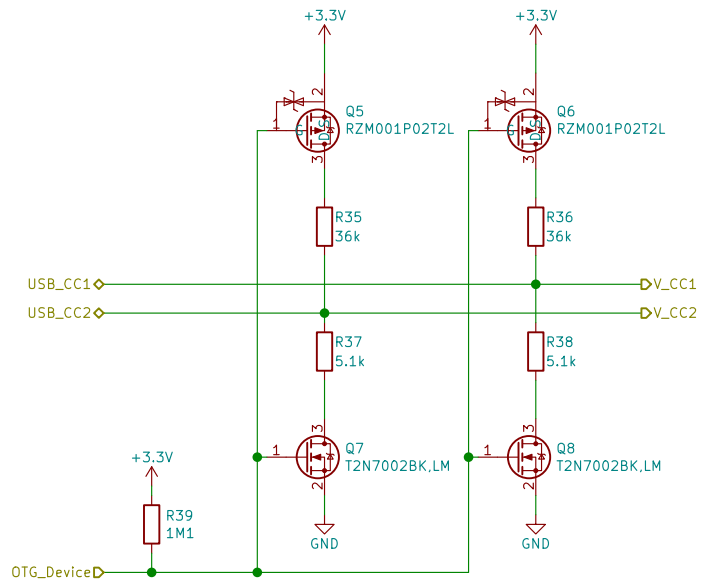
**WABEsense**

Rev: v1\_1

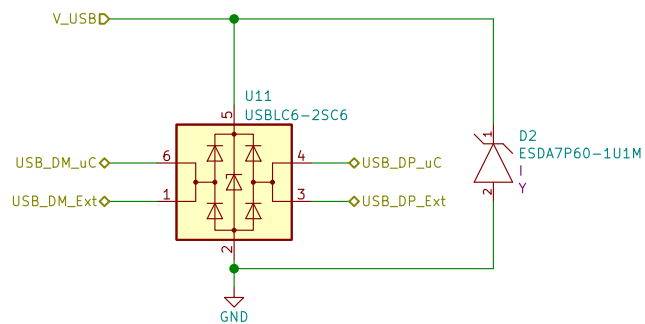
Id: 3/6



## OTG\_FS\_DFP\_UFP



## ESD Protection



This project is licensed under the Creative Commons Attribution Share Alike 4.0.

Adrian Tüscher (adrian.tuescher@ost.ch)  
[www.ost.ch](http://www.ost.ch) / IMES

**WABEsense**

Sheet: /usb\_connection/  
 File: usb\_connection.sch

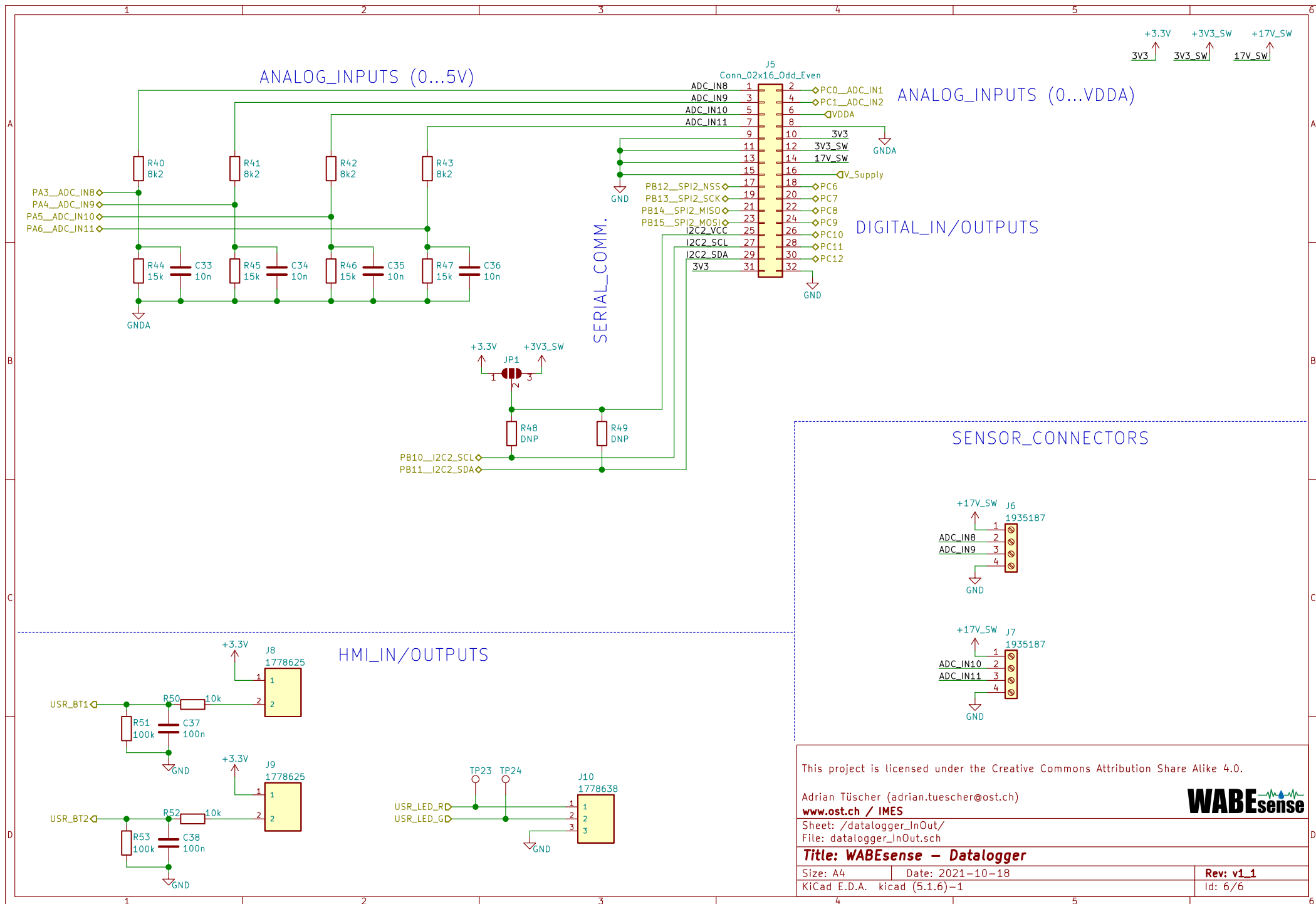
**Title: WABEsense – Datalogger**

Size: A4 Date: 2021-10-18

Rev: v1\_1

KiCad E.D.A. kicad (5.1.6)-1

Id: 5/6



This project is licensed under the Creative Commons Attribution Share Alike 4.0.

Adrian Tüscher (adrian.tuescher@ost.ch)

[www.ost.ch](http://www.ost.ch) / IMES

Sheet: /datalogger\_InOut/

File: datalogger\_InOut.sch

**Title: WABEsense – Datalogger**

Size: A4 Date: 2021-10-18

KiCad E.D.A. kicad (5.1.6)-1

**WABEsense**

Rev: v1.1

Id: 6/6